

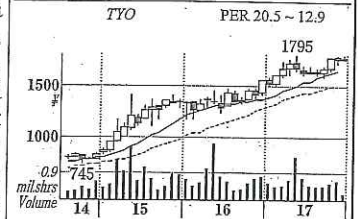
# 7921 TAKARA PRINTING

宝印刷

A leading printer of listed companies' disclosure documents. Founded as Takara Shokai in 1952, and established as the current TAKARA PRINTING in 1960. Business ranges from public listing preparation documents to continuous disclosure. Engaged in the printing of IPO, corporate law and the Financial Instruments and Exchange Law-related documents, and also provides consulting and support services for document compilation for investment trusts and IR. Amendments to the Companies' Act, the introduction of quarterly securities reports, and system revisions such as the switch to XBRL are benefiting the company's earnings. Plans to rise market share in IPO-related documents and securities reports by increasing the sales force. Eager to broaden IR support services.

Head Office 3-28-8, Takada, Toshima-ku, Tokyo 171-0033

Tel: 03-3971-3101



Stocks (Round lot, 100 shares)

Exchanges: TYO

Prices	High	Low
~ '13	3990 ('90)	371 ('97)
'14	869 (Jul)	685 (Feb)
'15	1404 (May)	815 (Jan)
'16	1565 (Dec)	1167 (Jan)
# '17	1795 (May)	1484 (Jan)

Finance (1000 shares)

Jul '88	2:1 Gratis	598
Oct '88	Split 1->10	5,985
Dec '88	Pub 0.4 (¥1370)	6,385
Jul '89	10:1 Gratis	7,023
Jul '94	Split 10->11	8,838
Oct '00	Split 10->11	10,433
Jul '04	Split 10->11	11,476
Sep '06	Split 10->11	12,863

Shares Issued (Oct 31 '17 1000 shares)

Market Cap (¥mil) 22,911

No. of Shareholders (May'17) 21,834

Major Holders (%) Foreign Owners (3.4)

Company's Tr. Stock (13.5), Nomura Co.

(4.8), Mizuho Bank (4.2), Sumitomo

Mitsui Banking (3.6), Japan Trustee-

Services, T. (2.7), Master Trust Bank of

Japan, T. (1.8), Company's Stockholding

Assn (1.7), Japan Trustee Services, T5

(1.4), Akemi Nomura (1.3), Sumitomo

Mitsui Trust Bank (1.3)

Income (¥mil)	Sales	Opex.P	Ord.P	Net.P	EPS(¥)	DPS(¥)	Dividend (¥)
□ 14. 5	12,645	1,286	1,465	869	74.6	24 E	15. 5 25
□ 15. 5	13,469	905	1,026	578	50.2	35	15.11 25
□ 16. 5	14,669	1,570	1,727	1,084	97.0	50	16. 5 25
□ 17. 5	15,156	1,476	1,604	1,082	96.8	50	16.11 25
□ 18. 5	15,500	1,530	1,630	1,100	98.4	50	17. 5 25
□ 19. 5	15,800	1,600	1,700	1,150	102.9	50	17.11 25
□ 16.11	8,606	1,344	1,396	961	86.1	25	18. 5 25
□ 17.11	8,800	1,380	1,430	970	86.8	25	Div. yield 2.82%
□ 16. 6-8	5,770	1,531	1,563	1,063	95.2		BPS (¥) □ Aug'17 1,277 (1,209)
□ 17. 6-8	5,630	1,398	1,428	974	87.1		

Est: Apr 1960 List: Dec 1988

Chairman: -

President: Seichiro Akutsu

Employees (age/income) □ Aug'17

698/ 626 (40.7/ 6.52 ¥mil)

Consolidated Sales (%) May'17

Financial product transac-

tion law-related printing 33

Corporation law-related printing 26

Investor relations-related

printing 26

Others 15

Underwriters: @ Nomura @

Daiwa, Nikko, Mitsubishi UFJ

Morgan Stanley, Mizuho

References: Mizuho, SMBC,

BOTMU

Finan. Data (¥mil) □ Aug'17

Total Assets 18,152

Shareholders' Equity (%)

14,274 (78.6)

Capital Stocks 2,049

Ret. Earnings 11,558

Borrowings 11

Cash Flows (¥mil) □ May'17 □ May'16

CF(Operating) 1,564 ( 1,977)

CF(Investing) -576 ( -312)

CF(Financing) -575 ( -560)

Cash Equivalents 6,590 ( 6,178)

Indices (¥mil) □ May'17 □ May'18

ROE(%) 8.3 7.7

ROA(%) 5.8 6.1

Capital Spending 541 865

Depn & Amorta 534 597

R&D Expenditure 0 0

Highest Net Profit □ May'16 1,084